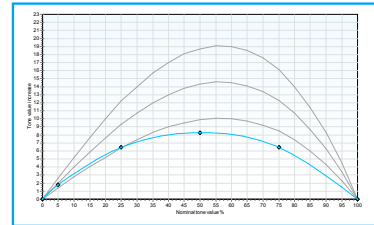


DENSITOMETRY

DOT GAIN

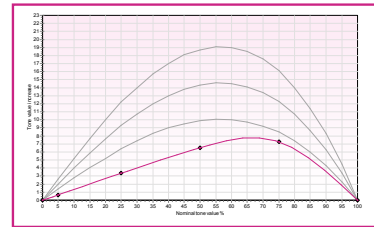
Cyan - Solid density **1.27**

Cyan - dot gain									
Nominal	5%	25%	50%	75%	-	-	-	-	-
Dot gain	1.8	6.4	8.3	6.5	-	-	-	-	-
lower limit	1.4	6.4	9.9	8.5	-	-	-	-	-
optimal	2.0	9.3	14.3	12.3	-	-	-	-	-
upper limit	2.6	12.2	18.7	16.1	-	-	-	-	-



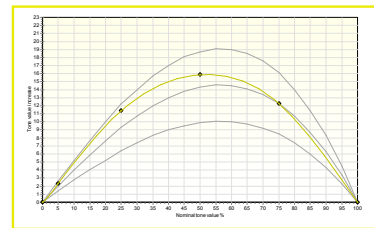
Magenta - Solid density **1.28**

Magenta - dot gain									
Nominal	5%	25%	50%	75%	-	-	-	-	-
Dot gain	0.7	3.4	6.5	7.3	-	-	-	-	-
lower limit	1.4	6.4	9.9	8.5	-	-	-	-	-
optimal	2.0	9.3	14.3	12.3	-	-	-	-	-
upper limit	2.6	12.2	18.7	16.1	-	-	-	-	-



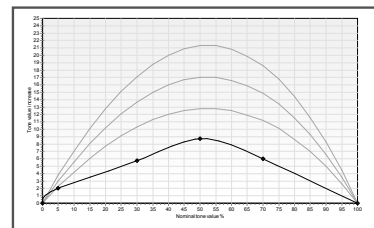
Yellow - Solid density **1.24**

Yellow - dot gain									
Nominal	5%	25%	50%	75%	-	-	-	-	-
Dot gain	2.3	11.4	15.9	12.3	-	-	-	-	-
std lower limit	1.4	6.4	9.9	8.5	-	-	-	-	-
std optimal	2.0	9.3	14.3	12.3	-	-	-	-	-
std upper limit	2.6	12.2	18.7	16.1	-	-	-	-	-



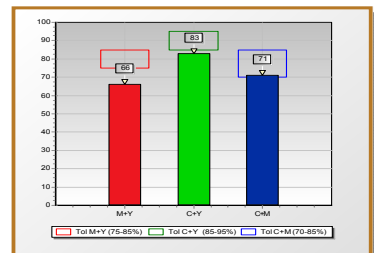
Black - Solid density **1.30**

Black - dot gain									
Nominal	5%	30%	50%	70%	-	-	-	-	-
Dot gain	2.0	5.7	8.7	6.0	-	-	-	-	-
lower limit	2.3	10.3	12.8	11.2	-	-	-	-	-
optimal	3.0	13.7	17.0	14.9	-	-	-	-	-
upper limit	3.8	17.1	21.3	18.6	-	-	-	-	-



TRAPPING

M+Y	C+Y	M+C
66 %	83 %	71 %

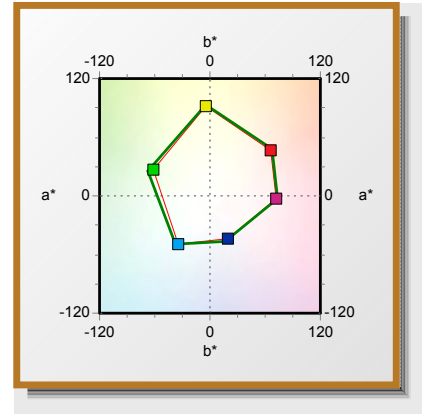


Licensed version to: Pixl Aps (sn.1038769966)

COLORIMETRY

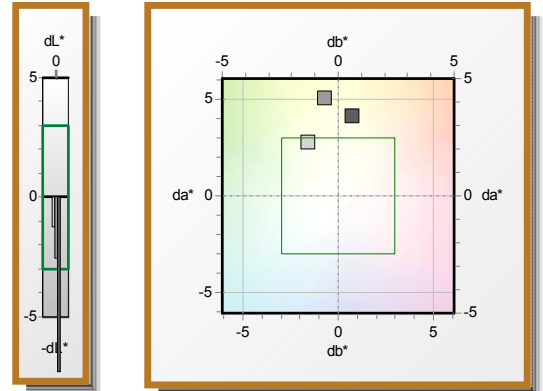
PRIMARIES

Solids and overprints										
	Measured			Standard			Differences			
	L*	a*	b*	L*	a*	b*	dL*	da*	db*	dE
Paper	93.2	1.2	-4.6	94.0	0.0	-2.0	-0.8	1.2	-2.6	3.0
Cyan	55.9	-34.0	-49.9	55.0	-37.0	-50.0	0.9	3.0	0.1	3.1
Magenta	47.8	72.0	-3.0	48.0	74.0	-3.0	-0.2	-2.0	0.0	2.0
Yellow	87.7	-3.9	92.2	89.0	-5.0	93.0	-1.3	1.1	-0.8	1.9
Black	24.3	0.2	1.6	16.0	0.0	0.0	8.3	0.2	1.6	8.4
M + Y (Red)	47.3	66.4	-45.9	47.0	68.0	-3.0	0.3	-1.6	-2.1	2.6
C + Y (Green)	49.3	-61.3	26.2	50.0	-68.0	25.0	-0.7	6.7	1.2	6.8
C + M (Blue)	25.2	19.6	-43.9	20.0	17.0	-46.0	5.2	2.6	2.1	6.2



GRAYBALANCE

CMY										
	Measured			Reference			Differences			
	L*	a*	b*	L*	a*	b*	dL*	da*	db*	dE
1/4 tone (25%)	78.3	-0.7	-0.6	79.5	0.9	0.9	-1.3	-1.6	2.8	3.5
1/2 tone (50%)	65.0	-0.5	2.4	67.6	0.3	0.3	-2.6	-0.8	5.1	5.8
3/4 tone (75%)	48.3	0.8	2.2	55.6	0.1	0.1	-7.3	0.7	4.2	8.5



CONCLUSIONS

Status: Not passed

Dot gain:
 Cyan dot gain values on : 50% ,75% are out of range
 Magenta dot gain values on : 5% ,25% ,50% ,75% are out of range
 Yellow All dot gain values are acceptable
 Black dot gain values on : 5% ,30% ,50% ,70% are out of range

Paper:
 Paper is out of range

Primaries/Secondaries:
 One or more primary colors are out of range: Black ,C + Y,C + M

Grey balance:
 CMY at 1/4 tone is in tolerance
 CMY at 1/2 tone is out of range
 CMY at 3/4 tone is out of range