

Intelli Scan 1600



 LaserSoft Imaging™
SilverFast® Ai 6

A3+ universal scanner with integrated transparency unit

Quato Scan Intelli Scan 1600

The Intelli Scan 1600 is the ideal partner for professionals from prepress and design segments, who are confronted with permanently rising demands as regards digital reproductions. This scanner qualifies for high-resolution designation and large-format scans thanks to its high physical resolution of 1,600 x 3,200 dpi.

- › A3+ scanning area für reflectives
- › A3 scanning area for transparencies
- › 1600 x 3200 dpi resolution
- › 3.7Dmax
- › 48 bit colors internal/external
- › Multisampling Kodak CCD
- › FireWire 400 and USB 2.0 interface
- › Transparency unit included
- › Silverfast Ai 6.5 and IT8 charts included

Features

Specifications

Color fidelity is essential for scanner performance, a result of tonal range, optical noise suppression, and CCD sensitivity. Intelli Scan 1600 meets these requirements with an optical color depth of 16 bit and a max density of 3.7. The scanning array is a CCD with 21.360 elements, characterized by extremely low noise spatial precision. The scanner uses up to 16 times multisampling technology to suppress carriage and system noise, ensuring crisp images without any blurring effects.

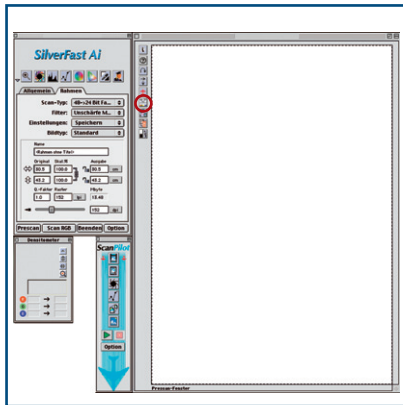
Software

The Intelli Scan ships with a custom version of the scan software SilverFast Ai 6 for Macintosh and Windows. SilverFast is justly acclaimed for combining a multitude of pertinent features with a user-friendly interface.

In addition to an automatic function, this software offers a variety of image-processing features used by professionals, like manual adjustment, a negative-positive conversion, dust and scratch removal. Full-screen previews









with WYSIWYG softproof function for RGB, CMYK, LAB and IVUE color spaces make it possible to gain a concrete impression of the image before the actual scan process if the Monitor is calibrated. Both reflective and transparent IT-8 charts are included so the Intelli Scan 1600 can be embedded in the ColorSync™ / ICC workflow. In sum, this scanner is your ideal tool if you attach great importance to high resolutions, large scan areas and optimum color coherence.

Software



Precise color calibration

SilverFast AI 6.5 supports a direct IT8 calibration for transparencies and reflectives. Both charts are included in the box.

	SRD - intelligent dust and scratch removal		GANE - grain and noise reduction
	SCC - selective color corrections		MidPip4 - multiple neutralising pipette
	ACR - adaptive color restoration		SF_App - stand-alone-application
	SC2G - selective color to gray		NegaFix - perfect negative reproduction

Specifications

Scanning type

Flatbedscanner with moving CCD

CCD-type

Multisampling - CCD
7µ size
21.360 elements

Lamp

cold cathode

Scanning area (reflective)

430 x 305 mm

Scanning area (transparencies)

406 x 305 mm

Output resolution

1.600 x 3.200 dpi

Optical colors

48 bit colors
16bit grays

Maximum density

3.7 Dmax

Optical density range

0.0 D to 3.4 D

Connection

FireWire (2x 6Pin)
USB 2.0

Software

SilverFast AI 6.5 IT8

Operating systems

Mac OS X 10.3.9 or newer
Windows XP, Vista

In the box

FireWire card (PC)
Transparency adapter
Transparency frames
IT8 Charts (Kodak Q60 reflective/transp.)
USB-, FireWire-cable, power cord
Software

Warranty

24 month (EC only)

Dimensions

628 mm x 376 mm x 160 mm

Weight

19 kg

EMI-certifications

FCC, CE, ITS-GS approved security

Part number

060100



Specifications are subject to change without notice