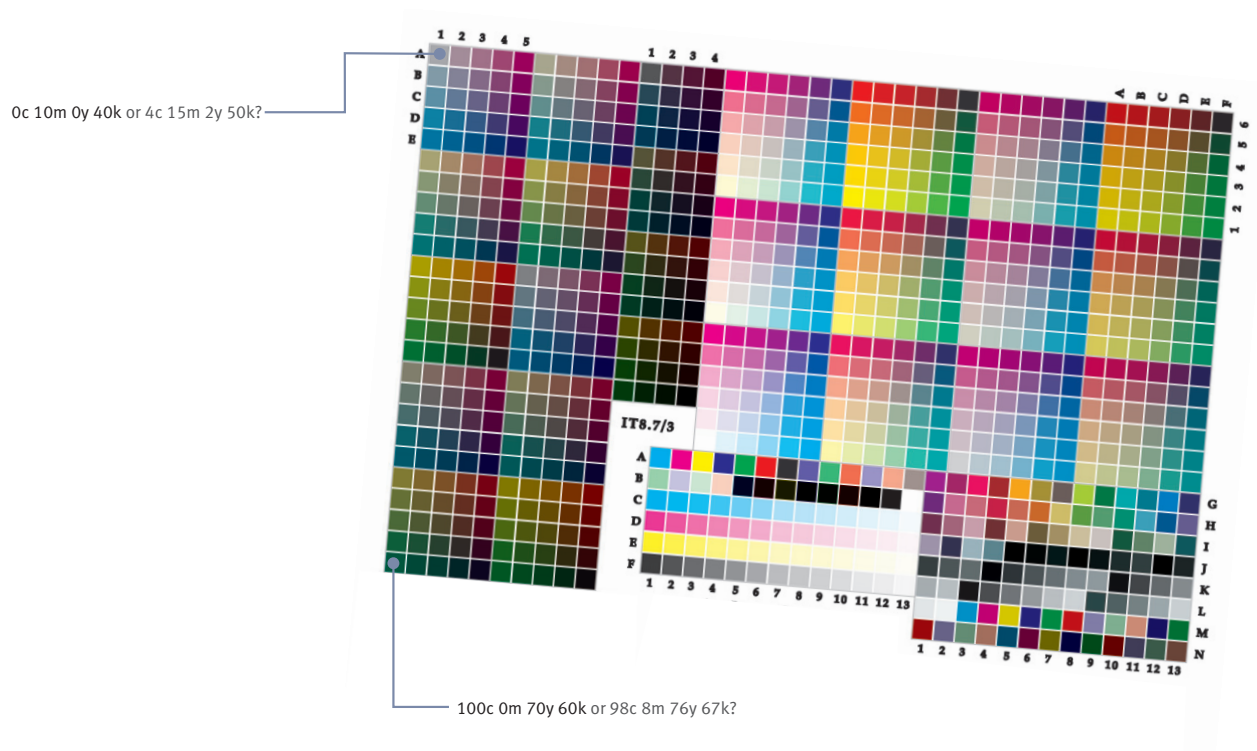


Colormanagement ensembles



Tools for color management appliances

Quato color savvy add-ons

Wrong or insufficient environmental lighting is one of the most problematic issues upon comparing soft proofs, contract proofs and prints. The tonal response of a print always depends on the light that is used to illuminate the viewing area. The perception of a color highly depends on the surrounding colors and the lighting conditions. Apart from this, the light that illuminates the colors that are observed has an even larger influence on the perception of the color. As the color appearance changes with different illuminants, the ISO3664 (Viewing Conditions) and ISO12647-x (Graphic Technology) define a standardized lighting for judging proofs: the D50 standard.

To solve the most common problems, Quato offers solution to judge colors in the right way. While the Lightbox XL₂ uses ISO3664 light to compare hardproofs with softproofs and printouts, the Intelli Light Test helps to judge if the environmental light matches the criteria for color communication or not. Finally, the reference print helps to easily judge a display's or printer's color performance in uncertain situations and also helps to trace potential workflow problems.

- › Lightbox XL₂ for comparisons between softproof and printed proof up to A3+ size
- › Intelli Light Test for judging the environmental light to be proof compliant or not
- › Quato reference print for fast visual detection of potential workflow problems

Features

Intelli Light Test

Wrong or insufficient environmental Lighting is one of the most problematic issues when comparing Soft-Proofs on a display with printed Proofs. Therefore the ISO 12646 regulation uses 5000 K (or D50) as the standard lighting. With the Intelli Light Test, you can now simply proof if your lighting conditions are valid for proofing or not. The test strip will indicate with two metameric colors if the light does or does not comply with the D50 standard.

Lightbox & Lightbox XL₂

With a D50 illuminant featuring a color temperature of 5000 K the Lightbox XL₂ is the ideal work station for checking ink-jet proofs up to A3+ size under ISO standardized lighting. The Lightbox is ideal tool when comparing smaller images and transparencies side by side with the display's output.

The special technology supports even illumination that is glare and reflection free.

The electronic dimmer allow to adjust the Lightbox to the display's luminance for a perfect soft proofing illumination.

Reference Print

If the screen does not match the print, or the proof does not match the print, it's not always easy to find the reason. The Quato Reference Print can help to trace whether the print or the screen and proof is inaccurate. This is a good tracing tool for potential workflow problems.

Tools and Devices

Intelli Light Test

Wrong or insufficient environmental Lighting is one of the most problematic issues when comparing Soft-Proofs on a display with printed Proofs. Therefore the ISO 12646 regulation uses 5000 K (or D50) as the standard lighting. With the Intelli Light Test, you can now simply proof if your lighting conditions are valid for proofing or not. The test strip will indicate with two visually different colors if the light does or does not comply with the D50 standard.

If the environmental lighting is exactly 5000 Kelvin, then all color patches will have the same color appearance. Normally you will notice a slight difference, as even special lighting will not exactly match the D50 standard. But this is absolutely a normal behaviour.

If the color patches look quite different, then you have insufficient lighting conditions like room lights, standard bulbs or daylight from other light sources. This environment is not suitable for judging proofs.

The color temperature indicator is a good tool to control the lighting conditions. However, it could not replace a precise spectral measurement and could only tell you if the environmental lighting is not suitable for proofing. It could not tell how well a light is suited for proofing. This has to be measured by other spectral based tools.

QUATO
Technology

Intelli Light Test

D50 standardized light should simulate the average daylight with 5000 Kelvin very precise and repeatedly. Different D50 light sources will have different spectral ranges and response curves. So it is not unusual if you encounter slight variations in the test strips even with a D50 viewing booth. This is normally no cause for concern. Only if this encounter clearly visible banding and therefore a higher difference between the two colors, your lighting environment is not well suited for judging colors and printouts or proofs.

Attention please
Please keep in mind that this indicator is designed to simulate best lighting conditions, not to validate good ones.

Some background
This indicator can be metameric color. Under certain light these two colors behave the same. Under some other light these two color behave different.

Metamerism isn't an error at all. Only metamerism allows the reproduction of the real world in color. Different printing colors, tints or pigments will have different spectra curves compared to the original. Fortunately, the human eye is limited to the total response curves. Therefore we can achieve the same color reproduction with different spectra. Metamerism color reproduction with different spectra. Metamerism is at the end not a problem of our vision. It is a result of the way the eye works.

QUATO
Technology



Specifications

Intelli Light Test

Type
Indicator for metamerism

Usage
Proofing of environmental light conditions and attaching on proofs to ensure optimal lighting environment at the customer's office.



Part number
030302 with background and usage informations in a 50pcs package.

030301 stand alone product in a 50pcs package.

Lightbox XL₂

The Lightbox XL₂ is a sleek, portable color viewing system for DTP-workstations. It is the basic requirement for visual color judgement of inkjet-proofs with 5.000 Kelvin and can be adjusted to the Monitor's luminance level. The unique folding design incorporates a carry handle.

Type
ISO3664 compliant Reflective D50 viewing booth with side walls

Size
A3+ size

Usage
Direct comparison between monitor and printouts / proofs

Light
2x D50 Daylight Control tubes

Intensity
Adjustable from around 2.000 Lux to 450 Lux

Warranty
12 months

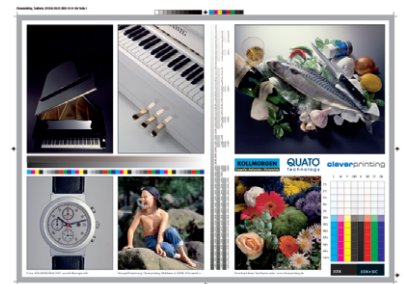
Part number
050221

Reference Print

Type
A3+ Offset Reference Print according to ISO 12647-2 and the Media Standard Offset based on ISOcoated reference profile

Usage
Direct comparison between monitor and reference print / outprint

Availability
Bundled with every Quato Monitor also available separately on request



Specifications are subject to change without notice