

# ProfileMaker 5

The revolution of professional color management

PM5 Packaging



Accelerate your time2market and significantly reduce your production costs.



## Color Management Tailored to the MultiColor Imaging Workflow

ProfileMaker 5 Packaging solution is tailored to meet the color management needs of the multicolor imaging workflow in the packaging market. It expands the open ICC standard to the ever increasing multicolor scenarios demanded by today's market and leads to reliable color communication.

Now producing an ICC color managed workflow has never been easier for the packaging printer. With PM5 Packaging you'll be able create multicolor ICC profiles and, with 1-click, automatically produce your separations and soft/hard proof directly in Photoshop. PM5 Packaging includes these new tools for your multi-color imaging workflow:

- **ICC MultiColor Separations:** 1-click automated MultiColor separations removes tedious manual process (Photoshop® Plug-In)
- **ICC Softproofing/Hardproofing:** Supports both soft and hard proofing of multicolor images directly in Photoshop (Photoshop® Plug-In)
- **N-Color ICC profile generation**  
Generate multicolor profiles up to ten channels with or without CMYK
- **Generic Output Profiler (GOP)**  
This patent-pending technology provides the ability to automatically rebuild a new profile when one or more spot colors change without recreating test charts, plates and cylinders – thus enabling the constant use of ICC profiles in a multicolor imaging workflow.

PM5 Packaging supports all printing technologies – Flexo, Gravure, Offset and InkJet and provides new color management tools to easily generate multicolor profiles in an ever changing spot color production environment.



## The Choice of Color Professionals



ProfileMaker 5

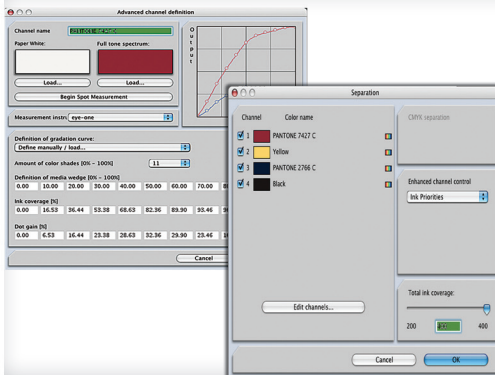
Professionals in color-critical environments worldwide have come to rely on ProfileMaker software to help them build high quality, reliable and customizable ICC color profiles. Profiles that connect the various steps in their color imaging workflow and put them on the direct route to accuracy and predictability. ProfileMaker 5 Packaging expands upon this tradition of excellence, setting new standards to easily and consistently implement color management within the multicolor packaging printing environment.





## MultiColor Separations and Soft/Hard Proof Photoshop® Plug-Ins

1-click automated separations and soft/hard proof directly in Photoshop®



## GOP Technology

Automatically regenerate a new profile when 1 or 2 spot colors change without creating a new testchart



## aNy-Color Module

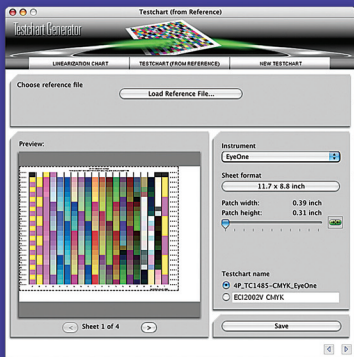
Easily creates profiles for N-Color, CMYK+X, CMYK and RGB

PM5 Packaging dramatically accelerates your time2market and significantly reduces your production costs. Calculate your individual ROI to see how quickly PM5 Packaging provides you with time and cost savings! Visit [xrite.com](http://xrite.com) > color management > PM5 Packaging and click the ROI icon.

PM5 Packaging provides all the tools and training to implement an ICC color imaging workflow.

For professionals in packaging and textile printing environments that work in a multicolor workflow, PM5 Packaging provides true N-Color profiling of output devices (proof and final). PM5 Packaging is fast, intuitive and productive to build, edit and fine tune color profiles for all of your devices included in your color imaging and reproduction workflow.

- Monitor and Scanner Profiling
- Output Profiling
- RGB, CMYK, Hexachrome®, CMYKRB, CMYKRG
- CMYK+N (up to 6 additional custom colors)
- N-Color (with or without CMYK) up to 10 channels
- Patent-pending GOP (Generic Output Profiler) Technology for the rapid exchange of colors within existing ICC profiles. This ICC workflow enabler avoids having to print test charts or recreate plates or cylinders for new jobs – simply measure the new colors and import into your existing profile. GOP technology automatically generates a new profile.
- Highly flexible test chart generation including CMYK+N and N-Color scenarios - leads to perfect characterizations right from the beginning without the need of time- and cost-intensive iterative workflows
- Adobe Photoshop® MultiColor Plug-Ins for automated 1-click separations, plus soft- and hard proofing of MultiColor separations directly in Photoshop®
- Professional profile editing
- Quality assurance and process control functionality – view and export density, view gradation and dot gain curves, compare and average measurement data
- Sophisticated spot color support for perfect spot color simulations on all printing technologies
- Includes two-day on-site training provided by X-Rite application specialist, or a trained and certified color consultant or dealer



## Testchart Generator

- Define Charts for MultiColor processes for up to 10 channels, with or without CMYK
- Define or load Pantone®, Lab values or perform spot measurements
- Define individual and global ink limits
- Tailor testchart format, amount of patches and size based on your measurement instrument

## Add color measurement that meets your budget and automation needs

No color management solution is complete without a high quality color measuring device. ProfileMaker 5 can be configured with the user's choice of X-Rite color measuring instruments that's appropriate to budget, flexibility, and production throughput requirements.

### i1Pro

The industry defacto standard for high quality semi-automated profiling for all devices in your workflow - monitor, scanner, printer or projector, plus ambient and flash light measurements - one device does it all!



### i1i0

Add-on automation table for all i1Pro devices providing the most versatility for substrates up to 10mm thick. i1Pro easily detaches from table to profile other devices.



### i1iSis

Easy to use automated chart reader for high production environments. UV and nonUV dual reading ability. i1iSis XL reads large test charts up to 2500 patches in single sheet.

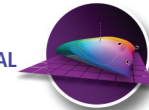


Check out our online training module on our website to learn more about PM5 Packaging  
[xrite.com](http://xrite.com) -> Products -> Color Management -> PM5 Packaging -> Tutorials

ACCURATE



FUNCTIONAL



FOCUSED



EXPANDABLE



## Included in PM5 Packaging

### Modules & Tools

- aNy-Color Output (N-Color with or without CMYK)
- GOP
- MultiColor separations and soft/hard proofs  
Photoshop® Plug-Ins – 3 licenses for 3 seats
- CMYK and RGB Output
- MeasureTool Complete
- ColorPicker
- ProfileEditor
- Monitor
- Scanner
- IT8 Targets

### Training

- 2-day on-site

### X-RITE WORLD HEADQUARTERS

Grand Rapids, Michigan USA • (800) 248-9748 • +1 616 803 2100  
 © 2007, X-Rite, Incorporated. All rights reserved.